



BEST SCIENCE



BEST SUPPORT



BEST SUCCESS



# B-Cube B-Cube B-Cube B-Cube

CYCLOTRON SOLUTION NEWSLETTER

ISSUE 1, AUTUMN 07

## From project to reality



Site engineering



Cyclotron "on stage"

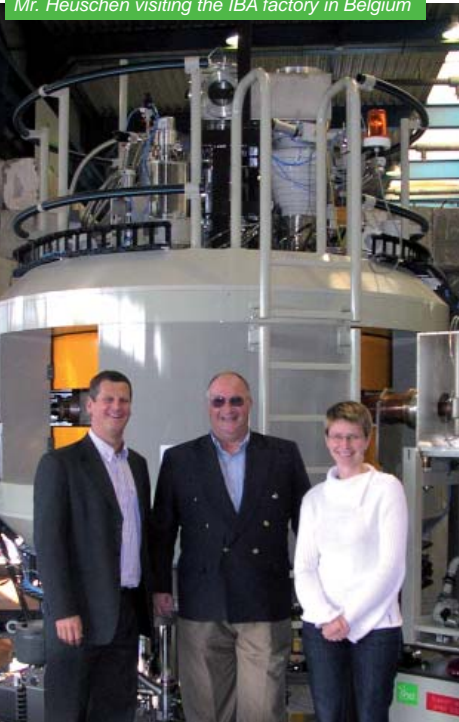


IFP™ technology



# Site engineering: a key to SUCCESS

Mr. Heuschen visiting the IBA factory in Belgium



“Acquiring a cyclotron is only the first step in a complex project in which several items of equipment must be integrated into a consistent solution. We have realized that, in order to guarantee the SUCCESS of our customers’ projects, providing full SUPPORT for a cost-effective solution has become a must. In keeping with our constant aim of providing BEST SCIENCE to all of our customers, for several years now we have had a dedicated team of experts to assist in developing fully compliant GMP solutions.”

Delphine Blampain  
 Facility and Process Engineering Manager  
 IBA Molecular, Cyclotron Solution

## FDI + Care

“Since the beginning of our 30 MeV cyclotron project, I have been most impressed by the responsiveness, engineering quality and knowledge of IBA personnel. Despite a very full agenda, thanks to their efficiency, we were able to complete design of an overseas state-of-the-art facility in record time, so as to be able to initiate the permitting process effectively.”

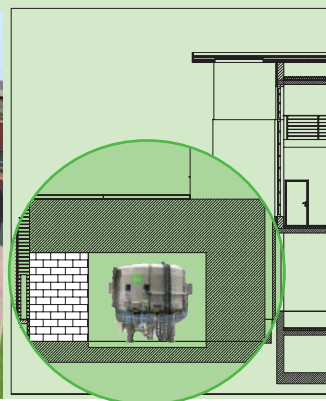
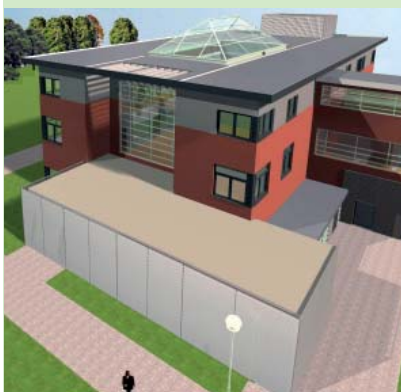
**Jean M Heuschen**  
*FDI + Care*, Consultant. Managing director of a major health care complex project integrating a 30 MeV cyclotron.

Biomolecular Sdn. Bhd. presentation



## Gliwice – Poland

IBA Molecular is providing expert support for the establishment of the first cGMP-compliant PET center in Poland. IBA’s support services include supplying know-how and transferring radiopharmaceutical processes under IBA’s European license.



## Biomolecular Kuala Lumpur

The mock-up of the first Industrial GMP PET center that will host the Cyclone® 18/9 was presented to H.E. YB Dato’ Seri Rafidaz Aziz, Minister of Industry of Malaysia.

## Ground-breaking ceremony in Hanoi



“Our hospital selected IBA technology and know-how based on IBA’s leadership in the industry worldwide and its ability to understand and tailor a custom-made, comprehensive solution to meet our country’s needs, including personnel training. We are enthusiastic about this ongoing collaboration, which satisfies the interest of the Vietnamese people in medical treatment and technical development.”

**Doctor Dinh Ngoc Duy**  
 Director of Tran Hung Dao Hospital, Hanoi, Vietnam



## IBA cyclotrons "on stage"

### IBA supports the WFNMB

As a proof of its ongoing commitment towards the members of the WORLD FEDERATION OF NUCLEAR MEDICINE AND BIOLOGY, IBA Molecular was exhibiting for the second time after WFNMB'02 in Santiago, Chile, a "live" Cyclone® 18/9 during the WFNMB'06 in Seoul, South Korea. The Cyclone® 18/9 was one of the highlights of the congress.

Members of the Nuclear Medicine Society of China, WFNMB November 06



IBA Molecular team, SNM June 07



### SNM Premiere

In June 2007, for the first time at a congress in the United States, a full size cyclotron was exhibited during SNM'07.

Model exhibited was the IBA Cyclone® 18/9, the highest producing capacity PET cyclotron available from any commercial supplier today. Visitors to the IBA booth had a chance to get hands at the most advanced cyclotron technology for the production of PET radioisotopes.

### IBA cares

**Performance-Reliability-Safety** were the main topics of this 6<sup>th</sup> IBA **USER'S MEETING** attended by 100 IBA cyclotron's users from over 20 countries have been attending this event.

"IBA's users participation in the various workshops is an important contribution to future product developments."

**Philippe Audon**  
Vice President Customer Services  
IBA

User's Meeting, Sevilla September 07



# Unique Integrated Fluidic Processor (IFP™)



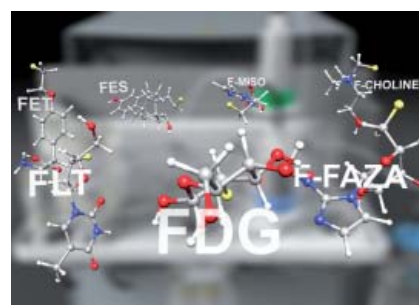
## Most Compact

Up to 3 Synthera® modules can be installed in one standard hotcell reducing your investment.



## Multi Runs

Synthera®'s unique auto-ejectable Integrated Fluidic Processor (IFP™) makes it the only true multi-runs system.

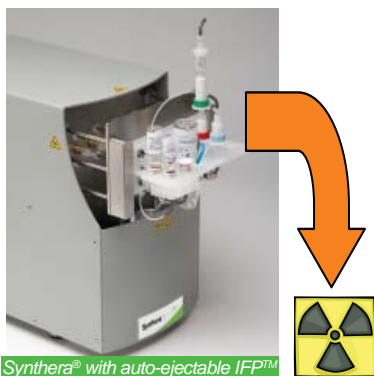


## Multi Tracers

In the future, it will be possible to produce different tracers simply by changing the IFP™ model.

## Synthera® Hotcell

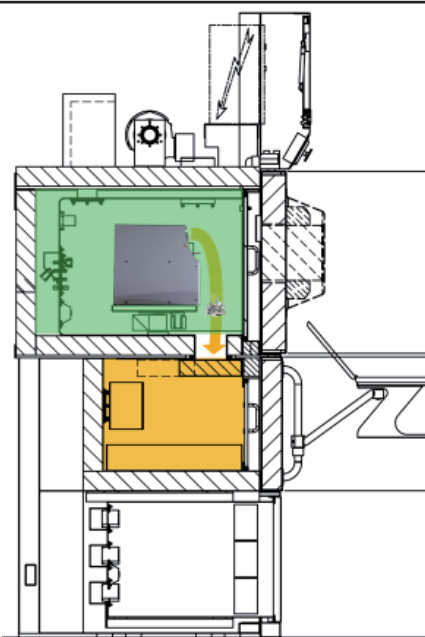
Through collaboration with hotcell's industry experts, IBA has designed a new generation of hotcell with a shielded waste receptacle. This new functionality unleashes the full potential of the Synthera® multi-runs capability.



Synthera® with auto-ejectable IFP™



IFP™



Avenue Einstein, 4  
1348 Louvain-la-Neuve Belgium

Tel.: +32 10 47 58 58  
Fax: +32 10 47 59 58

info-cyclo@iba-group.com

## Contact IBA Molecular

**Olivier Van Der Borcht**  
Vice President Sales & Marketing  
Olivier.vanderborcht@iba-group.com

**Dan Conatser**  
Sales Manager North America  
radiochemsolutions@verizon.net

**Bruno Scutnaire**  
Sales Manager MEA  
Bruno.scutnaire@iba-group.com

**Gregory Vanesse**  
Sales Manager  
Western Europe & Latin America  
Gregory.vanesse@iba-group.com

**Peter Leitner**  
Sales Manager Eastern Europe  
Peter.leitner@iba-group.com